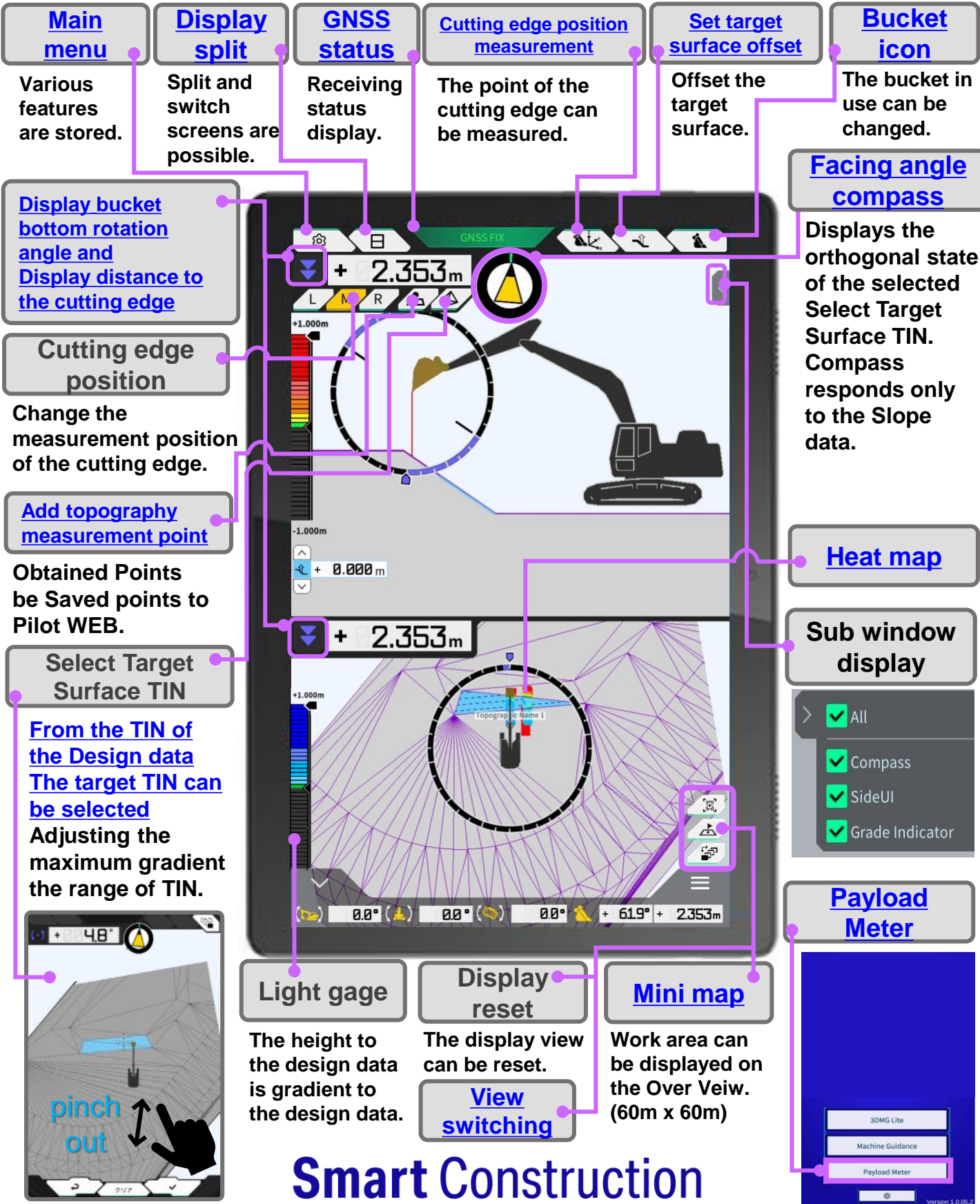


# 3D Machine Guidance Simplified chart

2024. April 1 Ver1.2.1

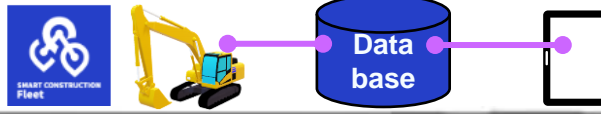


# Smart Construction

# 3D Machine Guidance Simplified chart

2024. April 1 Ver1.2.1

**SMART CONSTRUCTION Fleet** can display and select a list of trucks by connecting "Machine Registration" and "Payload meter".



## Truck list

Indication of maximum loading capacity of trucks.

## Selected truck

The currently selected truck is displayed.

## Load gauge

Loading volume is indicated by a gauge.

## Load volume

Numerical display of loading volume.

## Remaining Weight loadable

Displays remaining loadable capacity.

## Main menu

**Calibration settings** and You can set connecting to with Fleet.

**Calibration settings** are required to use payloads.

## Loading history

Loading history is displayed. It also deletes the history by clicking "history delete" loading.

## Digging gauge

Loading volume is indicated by a gauge.

## Digging volume

Numerical display of digging volume.

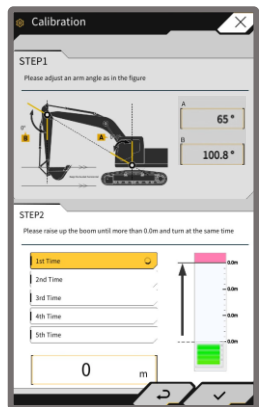
## Bucket digging amount

Maximum amount of digging per time is indicated.

## Caution

Indicated when loading is inaccurate.

## Machine Guidance



## Loading start · finish

Button for start/finish of loading.

## Loading history delete

Delete history during loading.

## Loading Pause

Suspend work during loading.

# Smart Construction

