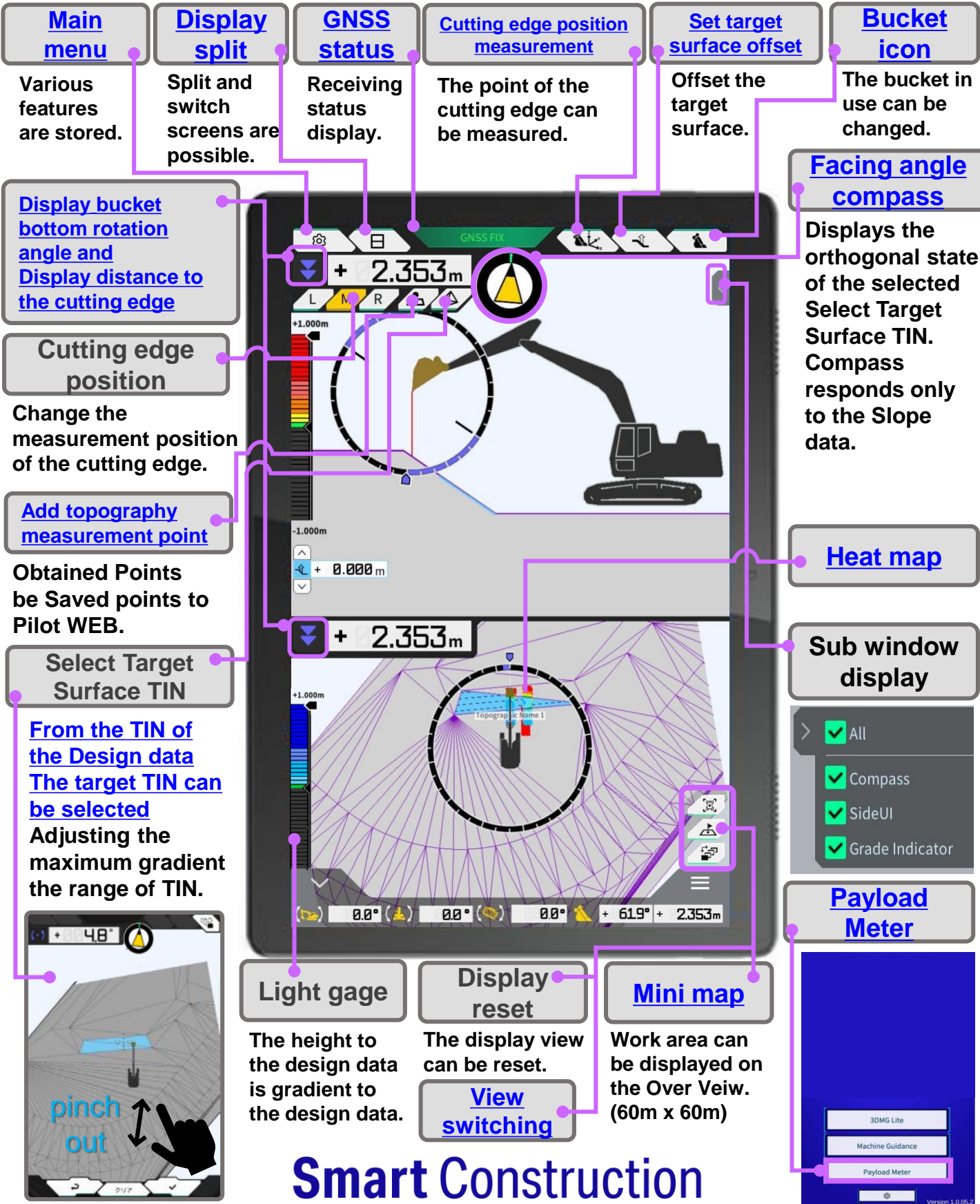


3D Machine Guidance Simplified chart

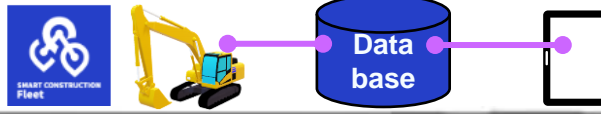
2024. April 1 Ver1.2.1



3D Machine Guidance Simplified chart

2024. April 1 Ver1.2.1

SMART CONSTRUCTION Fleet can display and select a list of trucks by connecting "Machine Registration" and "Payload meter".



Truck list

Indication of maximum loading capacity of trucks.

Selected truck

The currently selected track is displayed.

Load gauge

Loading volume is indicated by a gauge.

Load volume

Numerical display of loading volume.

Remaining Weight loadable

Displays remaining loadable capacity.

Main menu

Calibration settings and You can set connecting to with Fleet.

Calibration settings are required to use payloads.

Loading history

Loading history is displayed. It also deletes the history by clicking "history delete" loading.

Digging gauge

Loading volume is indicated by a gauge.

Digging volume

Numerical display of digging volume.

Bucket digging amount

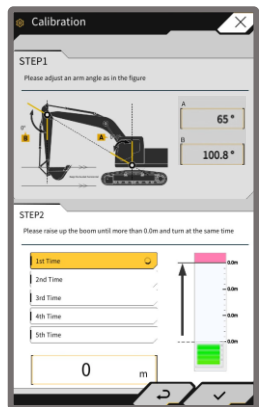
Maximum amount of digging per time is indicated.

Caution

Indicated when loading is inaccurate.

Machine Guidance

NAME	Load Capacity
TEST 1	8500 kg
TEST 2	9200 kg
TEST 3	8000 kg
TEST 4	8000 kg
TEST 5	8800 kg
TEST 6	8700 kg



Loading start · finish

Button for start/finish of loading.

Loading history delete

Delete history during loading.

Loading Pause

Suspend work during loading.

Smart Construction

