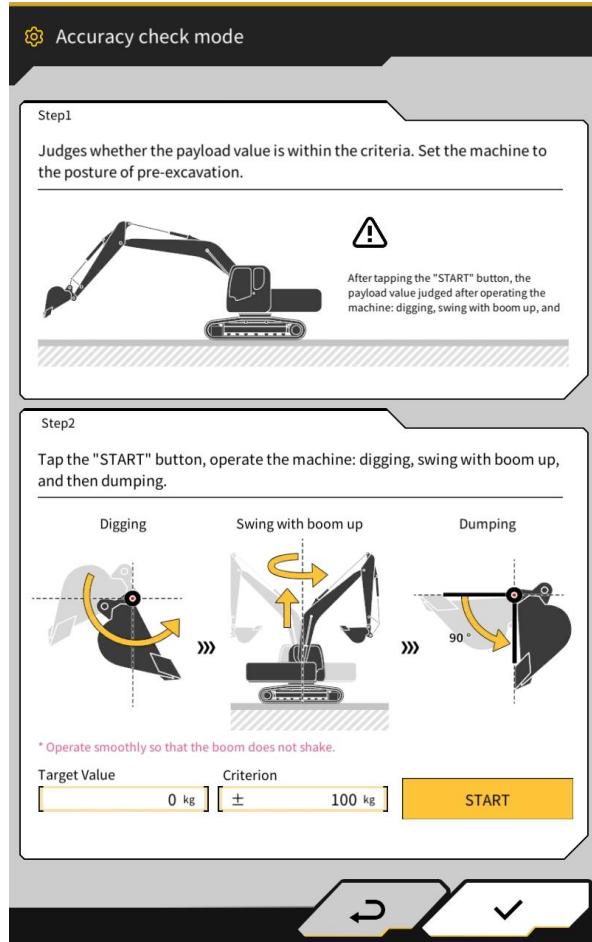
A large sunburst graphic with many thin blue lines radiating from a central point, positioned behind the main text.

Smart Construction Pilot v1.0.05 Updates

This function provides an accuracy check to check if the payload results are within standards.

Set the “Target Value” (default is 0kg = unloaded) and the “Tolerance” (default is 100kg).



■ Payload Meter

Menu > Accuracy check mode

■ Machine Guidance

Menu > Payload Configuration > Accuracy check mode

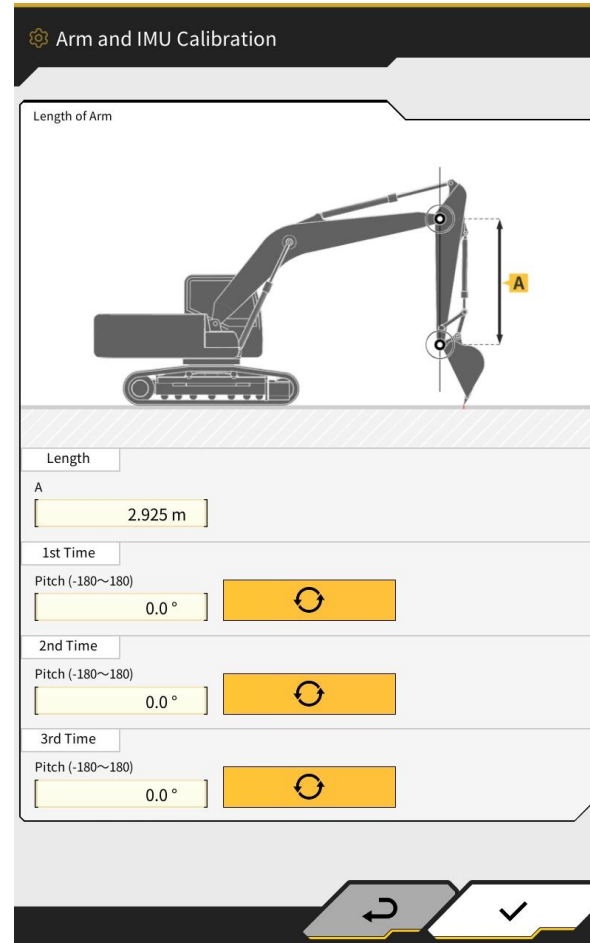
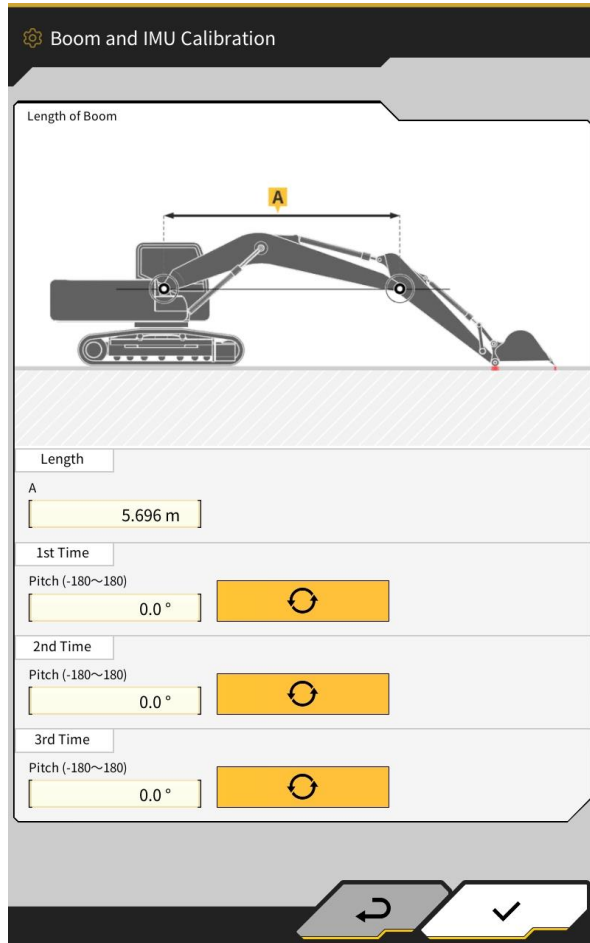
□ Important

Please complete the payload configuration before using this function.

- Machine calibration
- Bucket file setting
- Payload base machine setting
- Unloaded calibration

This function allows you to calibrate IMU and work equipment lengths without total station.

To calibrate the work equipment, measure the lengths and the IMU with the work equipment horizontal or vertical as shown in the picture.



Menu > Machine Calibration Settings > Individual Calibrations

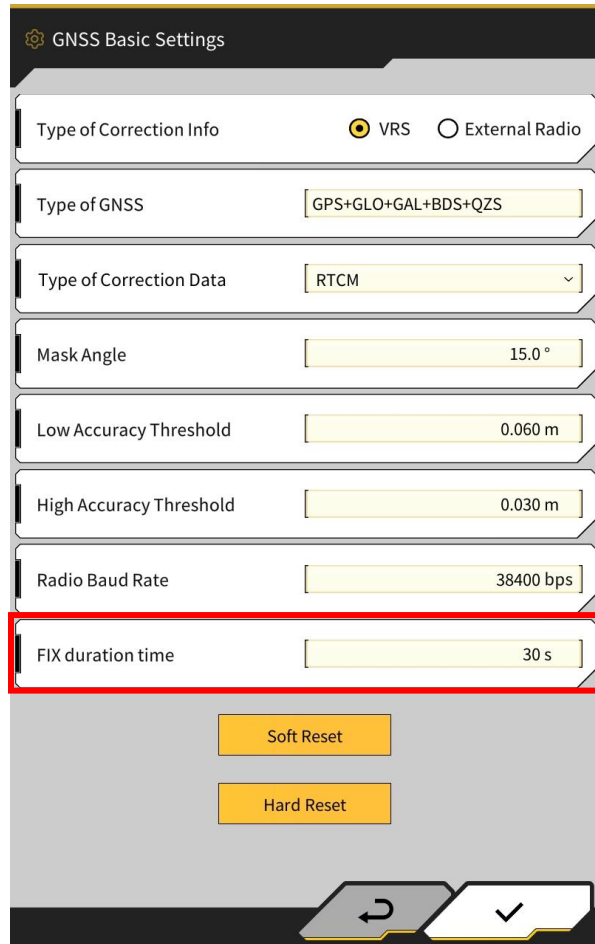
- Basic Machine Settings
- Body IMU Calibration
- Boom and IMU Calibration
- Arm and IMU Calibration
- Bucket Link and IMU Calibration

Important

Calibration of antenna mount position is not implemented.

FIX duration time can be changed.

FIX duration time was previously fixed as 30 seconds, but can now be changed between 10 to 60 seconds. Please change according to your situation.



The screenshot shows the 'GNSS Basic Settings' interface. The 'FIX duration time' field is highlighted with a red border and contains the value '30 s'. Other settings include:

- Type of Correction Info: VRS External Radio
- Type of GNSS: GPS+GLO+GAL+BDS+QZS
- Type of Correction Data: RTCM
- Mask Angle: 15.0°
- Low Accuracy Threshold: 0.060 m
- High Accuracy Threshold: 0.030 m
- Radio Baud Rate: 38400 bps

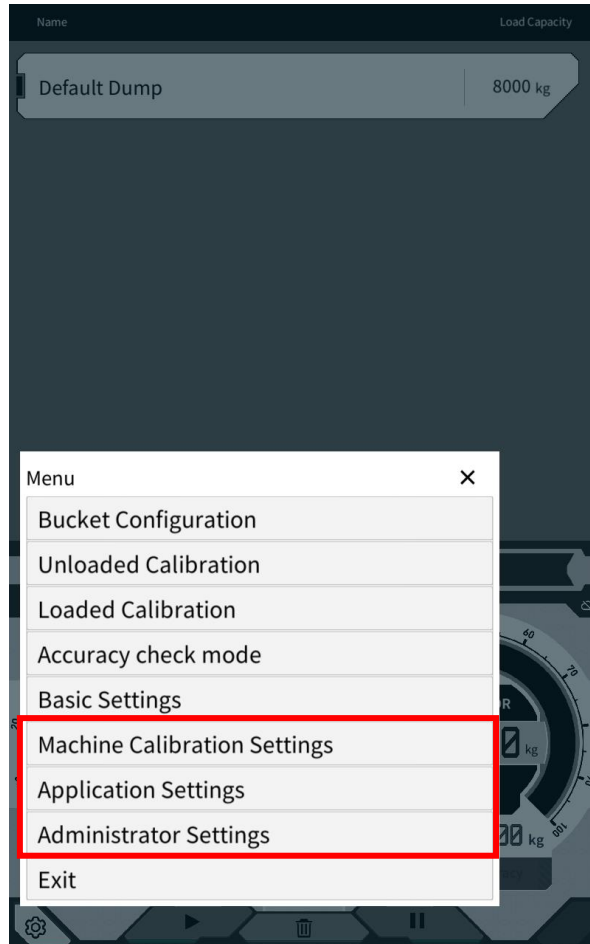
At the bottom, there are 'Soft Reset' and 'Hard Reset' buttons, and a navigation bar with back and confirm icons.

Important

This setting appears when the controller firmware version is 1.7.0 or later.

“Machine calibration settings”, “Application settings” and “Administrator settings” have been added to Payload Meter.

All necessary settings can now be made in Payload Meter without switching to Machine Guidance.

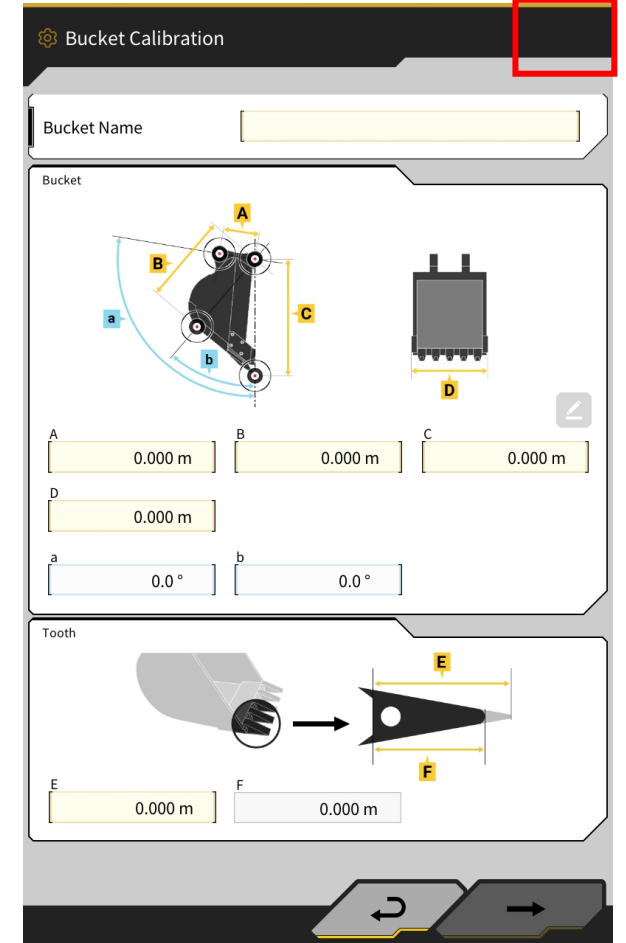
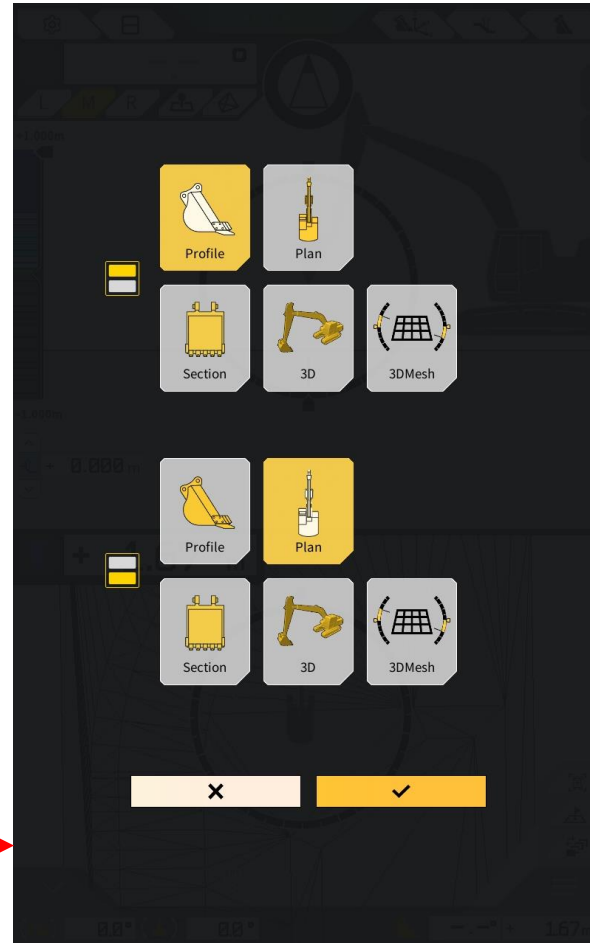
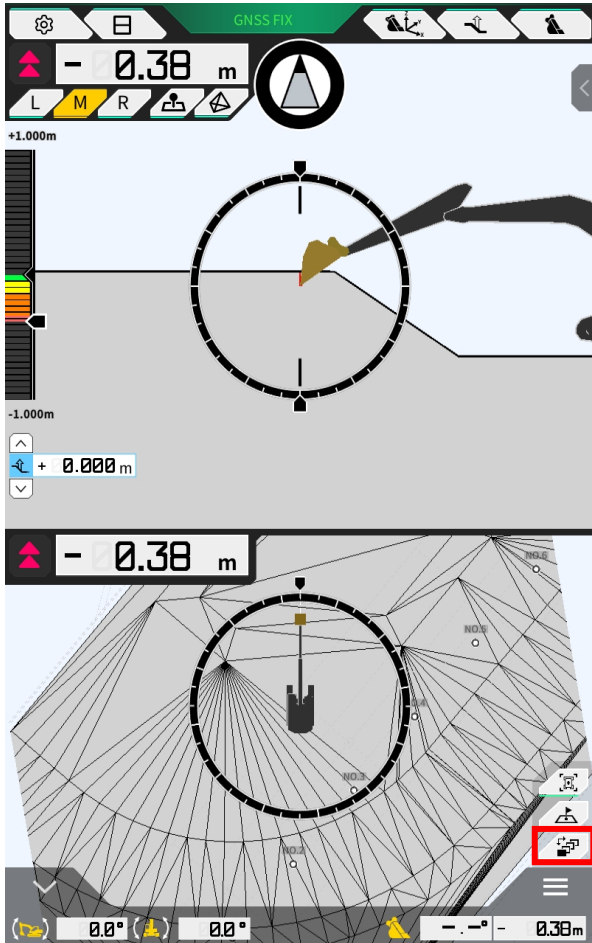


The following menus and submenus are available:

- Machine Calibration Settings
 - ❑ Machine Calibration
 - ❑ Individual Calibration
 - ❑ 2D/3D Accuracy Check
 - ❑ Machine Calibration Info
- Application Settings
- Administrator Settings
 - ❑ Controller Settings

Changes in shortcuts and each screen

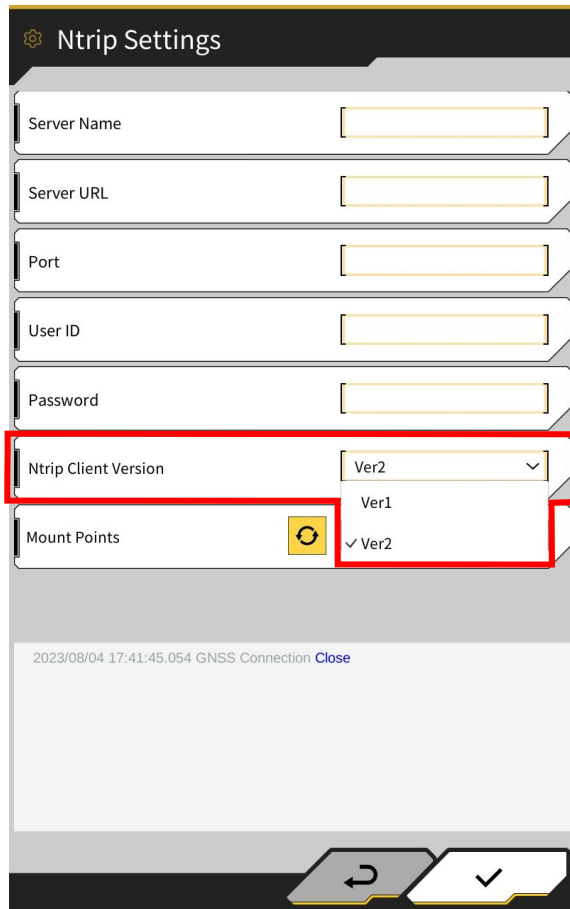
The design of the shortcuts has been changed. Each screen display can now be changed within 1 shortcut. Additionally, the X button in the upper right corner of each screen has been eliminated.



Two improvements have been made to Ntrip communications:

1) Support for TCP Client connection, 2) Add selection of Ntrip Client Ver1/Ver2.

Ntrip Client version can be changed in the GNSS Settings. Please change the setting according to the Ntrip Caster that needs to be connected.



Ntrip Settings

Server Name

Server URL

Port

User ID

Password

Ntrip Client Version

Mount Points

2023/08/04 17:41:45.054 GNSS Connection [Close](#)

Important

When connecting to NET-G5(Topcon) with Ntrip Client Ver2, RTCM does not include the observation data of each satellite(such as message type 1075, 1085), and we have confirmed that GNSS does not FIX.

Please select Ntrip Client Ver1 when you use NET-G5 as Ntrip Caster.

Support for Android12

Support for Android 12 and tablets with different aspect ratios.

Problem with project files getting stuck while loading.

Fixed an issue with a certain project file that would cause the application getting stuck while loading the project file.

Fixed tilt angle display bug in Bucket Configuration.

Fixed a bug that the tilt angle “c” is always displayed as 0.

Support for only being able to change bucket name.

When the bucket name is changed, the user can now choose whether to change the bucket name only or create a copy of it.

Delete bucket in the controller when it is deleted from the tablet.

When a bucket is deleted on the tablet, the user can now choose whether he wants to delete the bucket in the controller as well.



Changed Extension Arm Calibration to allow input of “E” and “F” minus values.

The input values may be negative depending on the type of extension arm.

Added display of an error message in Extension Arm Calibration Step 1.

Display a message if the link angle of the extension arm cannot be calculated from the input values.

Addition of a button to download geofences from the server.

A button has been added so that geofences created on the server and on other tablets at the same jobsite can be downloaded from the server.

Geofence color is not displayed correctly.

Fixed an issue where geofence colors were incorrectly displayed as “white”.